


NOTES:

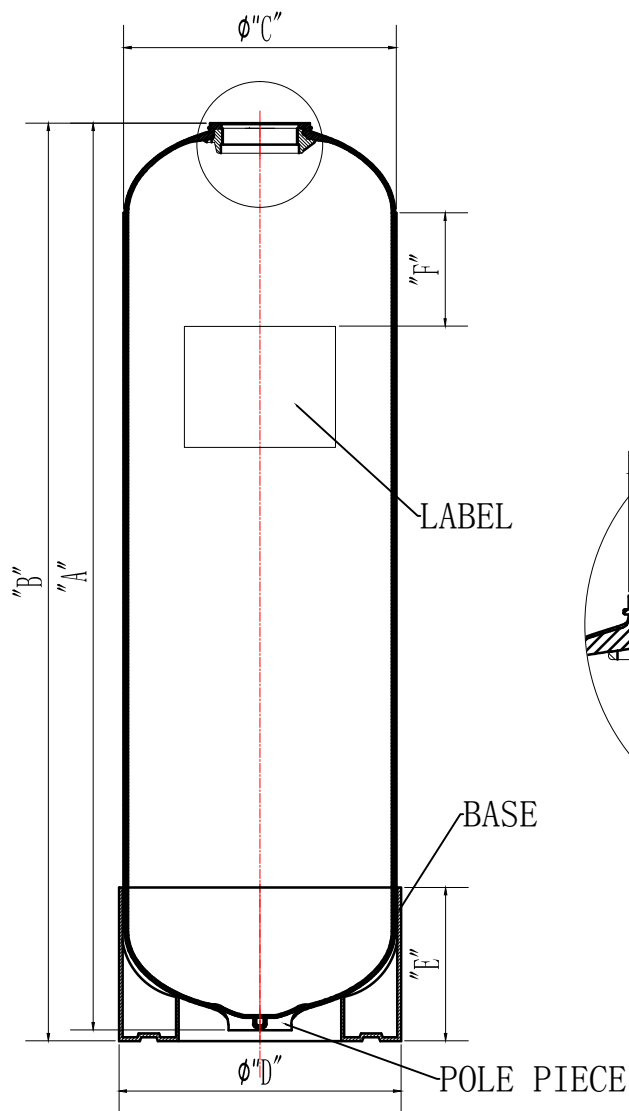
- TANK MUST MEET ALL APPLICABLE SPECIFICATIONS OF NSF/ANSI 044 STANDARD, LATEST REVISION.
- OPERATING SPECIFICATIONS:
 - MAXIMUM OPERATING PRESSURE: 10BAR
 - TEMPERATURE RANGE: 1-50°C (34-122°F)
 - MAXIMUM VACUUM: 127mm Hg (5" Hg)
- COLOR: NATURAL, BLUE, BLACK AND PAINTED

MATERIAL LIST		
No.	NAME	MATERIAL
1	LABEL	PP
2	INLET	7210
3	LINER	PE
4	OUTER LAMINATE	FIBER GLASS
5	BASE	PP

TECHNICAL SPECIFICATION

MODEL	OPENINGS	OPERATING PRESSURE	VOLUME		TOTAL TANK HEIGHT	TOTAL HEIGHT OF TANK WITH BASE	DIAMETER	DIAMETER OF BASE	HEIGHT OF BASE	LOCATION OF LABEL	BASE
		(Bar)	(Ltrs.)	(Gallon)	(mm)	(mm)	(mm)	(mm)	(mm)	(mm)	
					"A"	"B"	"C"	"D"	"E"	"F"	
6×13	2 1/2" TOP	10	4.6	1.2	320	337	155	165	91	50	Standard
6×17	2 1/2" TOP	10	6.6	1.7	422	435	155	165	91	50	Standard
6×35	2 1/2" TOP	10	13.7	3.6	880	918	155	165	91	100	Standard
7×13	2 1/2" TOP	10	6.3	1.7	320	335	182	197	110	50	Standard
7×17	2 1/2" TOP	10	8.6	2.3	422	438	182	197	110	50	Standard
7×35	2 1/2" TOP	10	20.1	5.3	880	895	182	197	110	100	Standard
7×44	2 1/2" TOP	10	25.6	6.8	1110	1125	182	197	110	100	Standard
8×13	2 1/2" TOP	10	8.5	2.2	320	335	210	216	119	50	Standard
8×17	2 1/2" TOP	10	10.9	2.9	422	435	210	216	119	50	Standard
8×35	2 1/2" TOP	10	25.0	6.6	880	890	210	216	119	100	Standard
8×44	2 1/2" TOP	10	32.1	8.5	1110	1115	210	216	114	100	Standard
9×17	2 1/2" TOP	10	13.8	3.7	422	440	232	240	119	50	Standard
9×35	2 1/2" TOP	10	32.1	8.5	880	900	232	240	136	100	Standard
9×42	2 1/2" TOP	10	38.4	10.2	1055	1075	232	240	136	100	Standard
9×48	2 1/2" TOP	10	44.4	11.7	1210	1225	232	240	136	100	Standard
10×17	2 1/2" TOP	10	16.7	4.4	423	440	260	269	146	50	Standard
10×35	2 1/2" TOP	10	39.4	10.4	880	890	260	269	146	100	Standard
10×44	2 1/2" TOP	10	51.2	13.5	1100	1130	260	269	146	100	Standard
10×54	2 1/2" TOP	10	63.0	16.7	1368	1385	260	269	146	100	Standard
12×48	2 1/2" TOP	10	89.0	23.5	1205	1230	310	318	180	100	Standard
12×52	2 1/2" TOP	10	97.0	25.7	1307	1330	310	318	180	100	Standard
13×44	2 1/2" TOP	10	86.8	23	1109	1125	336	343	188	100	Standard
13×54	2 1/2" TOP	10	105.3	27.9	1365	1380	336	343	188	100	Standard
14×52	2 1/2" TOP	10	115.7	30.6	1305	1340	362	369	200	100	Standard
14×65	2 1/2" TOP	10	148.5	39.3	1635	1655	362	369	200	100	Standard
16×52	2 1/2" TOP	10	153.0	40.5	1305	1330	412	422	215	100	Standard
16×65	2 1/2" TOP	10	192.1	50.8	1635	1650	412	422	215	100	Standard

00						2013/2/20
VERSION NO.	DESCRIPTION OF CHANGES:					DATE
SIGNATURE			Noyi Environmental Equipment Manufacturing(Beijing)Co., LTD.			
	NAME	DATE				
DESIGN	Tim. Cao	2013/2/20	SCALE	TITLE <div>2½" TOP OPENING FRP TANK</div>		
INSPECTION	Jenny. Deng	2013/2/21				
APPROVAL	Jim. Fu	2013/2/21	QUANTITY			
THIS PRODUCT DRAWING CAN NOT BE COPIED AND/OR USED WITHOUT WRITTEN APPROVAL OF NOYI			PROJECTION	COMPUTER CODE	DRAWING NO.	VERSION NO.
					NY-WI-DR-SA-001	00
			DO NOT MEASURE THE DIMENSIONS.		UNIT:MM □INCH	TOTAL PAGE:1 OF 5



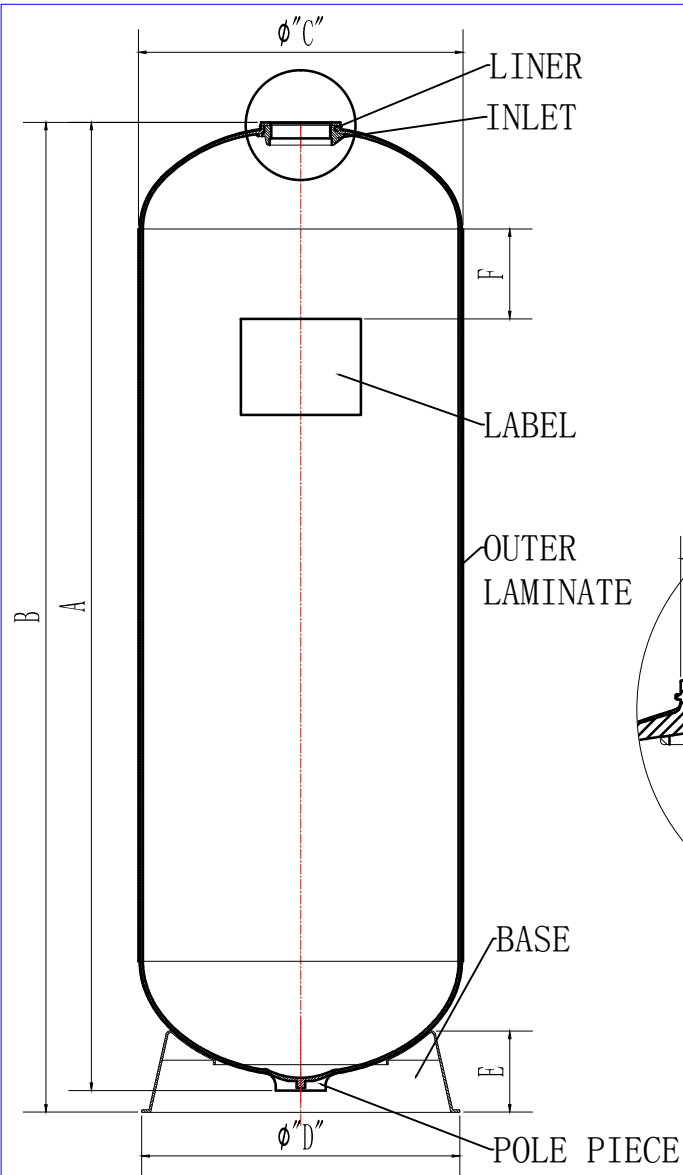
TECHNICAL SPECIFICATION											
MODEL	OPENINGS	OPERATING PRESSURE	VOLUME		TOTAL TANK HEIGHT	TOTAL HEIGHT OF TANK WITH BASE	DIAMETER	DIAMETER OF BASE	HEIGHT OF BASE	LOCATION OF LABEL	BASE
		(Bar)	(Ltrs.)	(Gallon)	(mm)	(mm)	(mm)	(mm)	(mm)	(mm)	
					"A"	"B"	"C"	"D"	"E"	"F"	
13×54	4" TOP	10	105.3	27.9	1365	1380	336	343	188	100	Standard
14×52	4" TOP	10	115.7	30.6	1305	1340	362	369	200	100	Standard
14×65	4" TOP	10	148.5	39.3	1635	1655	362	369	200	100	Standard
16×52	4" TOP	10	153.0	40.5	1305	1330	412	422	215	100	Standard
16×65	4" TOP	10	192.1	50.8	1635	1650	412	422	215	100	Standard

NOTES:

- TANK MUST MEET ALL APPLICABLE SPECIFICATIONS OF NSF/ANSI 044 STANDARD, LATEST REVISION.
- OPERATING SPECIFICATIONS:
 - A. MAXIMUM OPERATING PRESSURE: 10BAR
 - B. TEMPERATURE RANGE: 1-50°C (34-122°F)
 - C. MAXIMUM VACUUM: 127mm Hg (5" Hg)
- COLOR: NATURAL, BLUE, BLACK AND PAINTED

MATERIAL LIST		
No.	NAME	MATERIAL
1	LABEL	PP
2	INLET	7210
3	LINER	PE
4	OUTER LAMINATE	FIBER GLASS
5	BASE	PP
6	POLE PIECE	ABS

00					2013/2/20
VERSION NO.	DESCRIPTION OF CHANGES:				DATE
SIGNATURE			Noyi Environmental Equipment Manufacturing(Beijing)Co., LTD.		
	NAME	DATE			
DESIGN	Tim. Cao	2013/2/20	SCALE	TITLE 4" TOP OPENING FRP TANK	
INSPECTION	Jenny. Deng	2013/2/21	QUANTITY		
APPROVAL	Jim. Fu	2013/2/21	PROJECTION	COMPUTER CODE	DRAWING NO. NY-WI-DR-SA-002
THIS PRODUCT DRAWING CAN NOT BE COPIED AND/OR USED WITHOUT WRITTEN APPROVAL OF NOYI			DO NOT MEASURE THE DIMENSIONS.	UNIT:MM [] INCH	VERSION NO. 00
				TOTAL PAGE:2 OF 5	



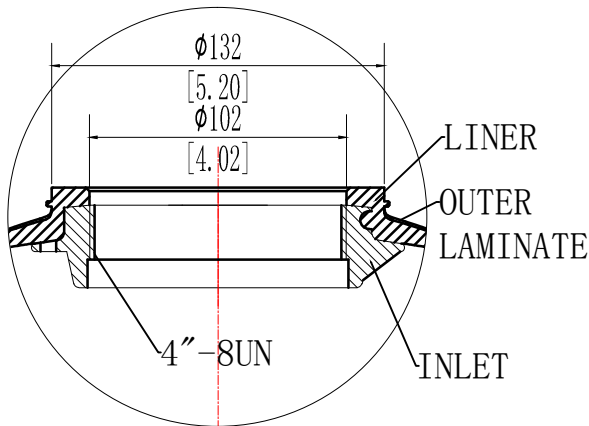
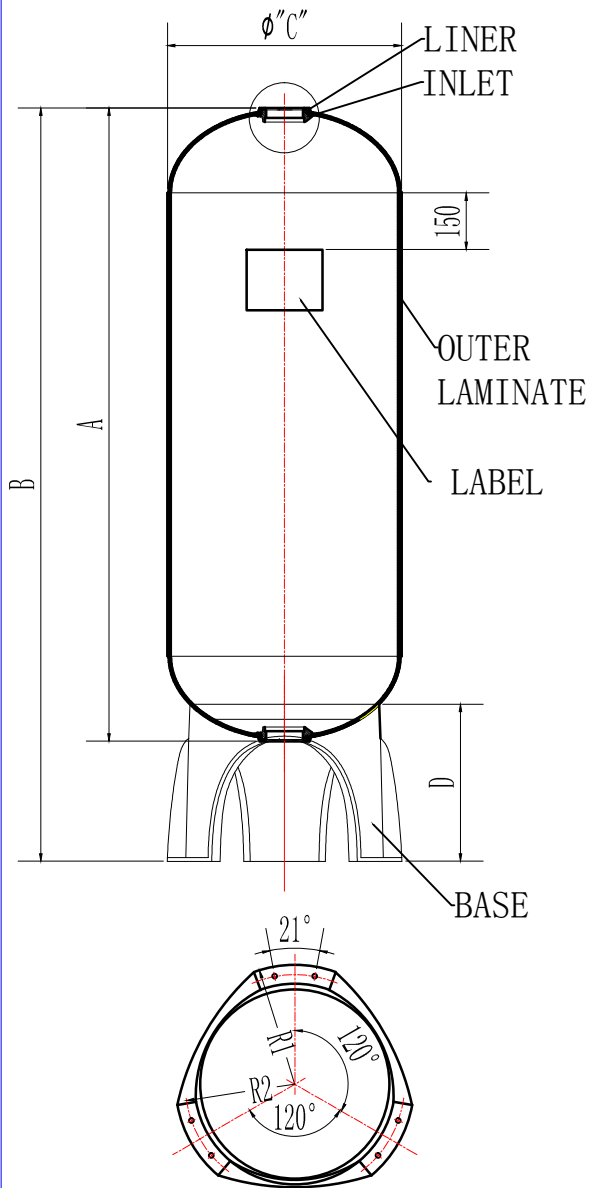
TECHNICAL SPECIFICATION											
MODEL	OPENINGS	OPERATING PRESSURE	VOLUME		TOTAL TANK HEIGHT	TOTAL HEIGHT OF TANK WITH BASE	DIAMETER	DIAMETER OF BASE	HEIGHT OF BASE	LOCATION OF LABEL	BASE
		(Bar)	(Ltrs.)	(Gallon)	(mm)	(mm)	(mm)	(mm)	(mm)	(mm)	
18×36	4" TOP	10	141.0	37.3	905	940	461	451	105	150	Standard
18×53	4" TOP	10	216.5	57.3	1335	1370	461	451	105	150	Standard
18×65	4" TOP	10	268.0	70.9	1640	1670	461	451	105	150	Standard
21×36	4" TOP	10	180.0	47.6	905	960	543	532	140	150	Standard
21×53	4" TOP	10	278.0	73.5	1335	1390	543	532	140	150	Standard
21×62	4" TOP	10	341.0	90.2	1560	1620	543	532	140	150	Standard
24×65	4" TOP	10	419.0	110.8	1680	1730	615	616	143	150	Standard
24×72	4" TOP	10	490.0	129.6	1850	1900	615	616	143	150	Standard
30×72	4" TOP	10	735.0	194.4	1840	1870	765	750	174	150	Standard
36×72	4" TOP	10	1031.0	272.8	1845	1960	920	910	250	150	Standard

NOTES:

- TANK MUST MEET ALL APPLICABLE SPECIFICATIONS OF NSF/ANSI 044 STANDARD, LATEST REVISION.
- OPERATING SPECIFICATIONS:
 - MAXIMUM OPERATING PRESSURE: 10BAR
 - TEMPERATURE RANGE: 1-50°C (34-122°F)
 - MAXIMUM VACUUM: 127mm Hg (5" Hg)
- COLOR: NATURAL, BLUE, BLACK AND PAINTED

MATERIAL LIST		
No.	NAME	MATERIAL
1	LABEL	PP
2	INLET	7210
3	LINER	PE
4	OUTER LAMINATE	FIBER GLASS
5	BASE	PP
6	POLE PIECE	ABS

00					2013/2/20
VERSION NO.	DESCRIPTION OF CHANGES:				DATE
SIGNATURE			Noyi Environmental Equipment Manufacturing(Beijing)Co., LTD.		
	NAME	DATE			
DESIGN	Tim. Cao	2013/2/20	SCALE		
INSPECTION	Jenny. Deng	2013/2/21	QUANTITY	TITLE	
APPROVAL	Jim. Fu	2013/2/21		4" TOP OPENING FRP TANK	
THIS PRODUCT DRAWING CAN NOT BE COPIED AND/OR USED WITHOUT PRIOR WRITTEN APPROVAL OF NOYI			PROJECTION	COMPUTER CODE	DRAWING NO.
			DO NOT MEASURE THE DIMENSIONS.	UNIT:MM []INCH	TOTAL PAGE:3 OF 5



TECHNICAL SPECIFICATION

MODEL	OPENINGS	OPERATING PRESSURE	VOLUME		TOTAL TANK HEIGHT	TOTAL HEIGHT OF TANK WITH BASE	DIAMETER	RADIUS	HEIGHT OF BASE	RADIUS	BASE
		(Bar)	(Ltrs.)	(Gallon)	(mm)	(mm)	(mm)	(mm)	(mm)	(mm)	
					"A"	"B"	"C"	"R1"	"D"	"R2"	
14×65	4" TOP AND BOTTOM	10	148.5	39.3	1635	1880	362	180	300	165	Tri-pod
16×65	4" TOP AND BOTTOM	10	192.1	50.8	1651	1910	412	205	300	192	Tri-pod
18×65	4" TOP AND BOTTOM	10	268.0	70.9	1640	1970	461	230	370	217	Tri-pod
21×62	4" TOP AND BOTTOM	10	341.0	90.2	1560	1890	543	274	400	249	Tri-pod
24×65	4" TOP AND BOTTOM	10	419.0	110.8	1680	2010	615	315	425	290	Tri-pod
24×72	4" TOP AND BOTTOM	10	490.0	129.6	1850	2180	615	315	425	290	Tri-pod
30×72	4" TOP AND BOTTOM	10	735.0	194.4	1840	2170	765	387	463	362	Tri-pod
36×72	4" TOP AND BOTTOM	10	1031.0	272.8	1845	2200	920	467.5	503	442.5	Tri-pod

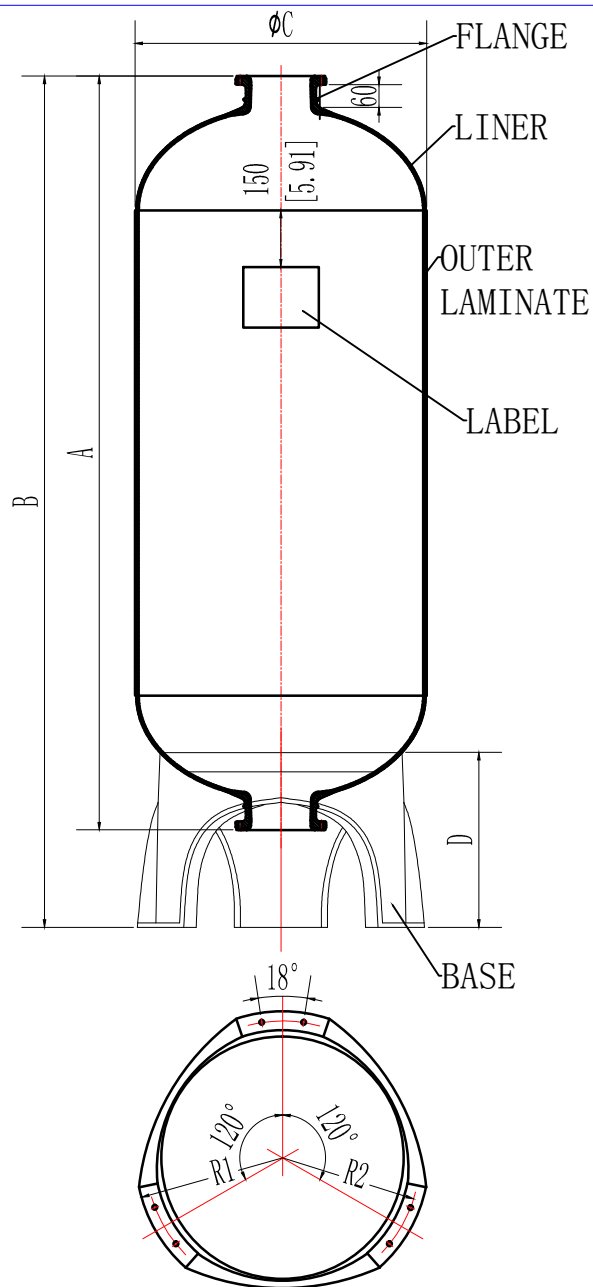
NOTES:

- TANK MUST MEET ALL APPLICABLE SPECIFICATIONS OF NSF/ANSI 044 STANDARD, LATEST REVISION.
- OPERATING SPECIFICATIONS:
 - A. MAXIMUM OPERATING PRESSURE: 10BAR
 - B. TEMPERATURE RANGE: 1-50°C (34-122°F)
 - C. MAXIMUM VACUUM: 127mm Hg (5" Hg)
- COLOR: NATURAL, BLUE, BLACK AND PAINTED

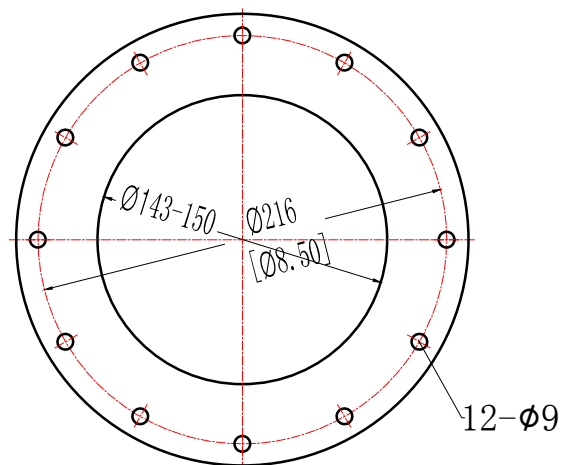
MATERIAL LIST

No.	NAME	MATERIAL
1	LABEL	PP
2	INLET	7210
3	LINER	PE
4	OUTER LAMINATE	FIBER GLASS
5	BASE	FRP

00					2013/2/20
VERSION NO.	DESCRIPTION OF CHANGES:				DATE
SIGNATURE			Noyi Environmental Equipment Manufacturing(Beijing)Co., LTD.		
	NAME	DATE			
DESIGN	Tim. Cao	2013/2/20	SCALE	TITLE 4" TOP-BOTTOM OPENING FRP TANK	
INSPECTION	Henry. Yu	2013/2/21	QUANTITY		
APPROVAL	Jim. Fu	2013/2/21	PROJECTION	COMPUTER CODE	DRAWING NO. NY-WI-DR-SA-004
THIS PRODUCT DRAWING CAN NOT BE COPIED AND/OR USED WITHOUT PRIOR WRITTEN APPROVAL OF NOYI				DRAWING NO.	VERSION NO. 00
				UNIT:MM [] INCH	TOTAL PAGE:4 OF 5




TECHNICAL SPECIFICATION											
MODEL	OPENINGS	OPERATING PRESSURE	VOLUME		TOTAL TANK HEIGHT	TOTAL HEIGHT OF TANK WITH BASE	DIAMETER	RADIUS	HEIGHT OF BASE	RADIUS	BASE
		(Bar)	(Ltrs.)	(Gallon)	(mm)	(mm)	(mm)	(mm)	(mm)	(mm)	
					"A"	"B"	"C"	"R1"	"D"	"R2"	
30×72	6" TOP AND BOTTOM	10	735.0	194.4	1988	2260	765	315	425	290	Tri-pod
36×72	6" TOP AND BOTTOM	10	1031.0	272.8	1988	2280	920	467	503	442	Tri-pod
42×72	6" TOP AND BOTTOM	10	1461	386.5	1997	2300	1067	530	536	505	Tri-pod
48×72	6" TOP AND BOTTOM	10	1890	500	1950	2250	1230	605	560	580	Tri-pod
63×67	6" TOP AND BOTTOM	10	2150	568.0	1765	2050	1625	780	630	755	Tri-pod
63×86	6" TOP AND BOTTOM	10	3326	879.9	2190	2475	1625	780	630	755	Tri-pod



NOTES:

- TANK MUST MEET ALL APPLICABLE SPECIFICATIONS OF NSF/ANSI 044 STANDARD, LATEST REVISION.
- OPERATING SPECIFICATIONS:
 - A. MAXIMUM OPERATING PRESSURE: 10BAR
 - B. TEMPERATURE RANGE: 1-50°C (34-122°F)
 - C. MAXIMUM VACUUM: 127mm Hg (5" Hg)
- COLOR: NATURAL, BLUE, BLACK AND PAINTED

MATERIAL LIST		
No.	NAME	MATERIAL
1	LABEL	PP
2	FLANGE	AL
3	LINER	PE
4	OUTER LAMINATE	FIBER GLASS
5	BASE	FPR

01	12-Ø8.3 CHANGE 12-Ø9			204/4/20			
00				2013/2/20			
VERSION NO.	DESCRIPTION OF CHANGES:			DATE			
SIGNATURE			Noyi Environmental Equipment Manufacturing(Beijing)Co., LTD.				
	NAME	DATE					
DESIGN	Tim. Cao	2013/2/20					
INSPECTION	Henry. Yu	2013/2/21					
APPROVAL	Jim. Fu	2013/2/21	SCALE	TITLE 6" TOP-BOTTOM OPENING FRP TANK			
			QUANTITY				
THIS PRODUCT DRAWING CAN NOT BE COPIED AND/OR USED WITHOUT PRIOR WRITTEN APPROVAL OF NOYI			PROJECTION	COMPUTER CODE	DRAWING NO.	VERSION NO.	
					NY-WI-DR-SA-005	01	
			DO NOT MEASURE THE DIMENSIONS.		UNIT:MM [] INCH	TOTAL PAGE:5 OF 5	